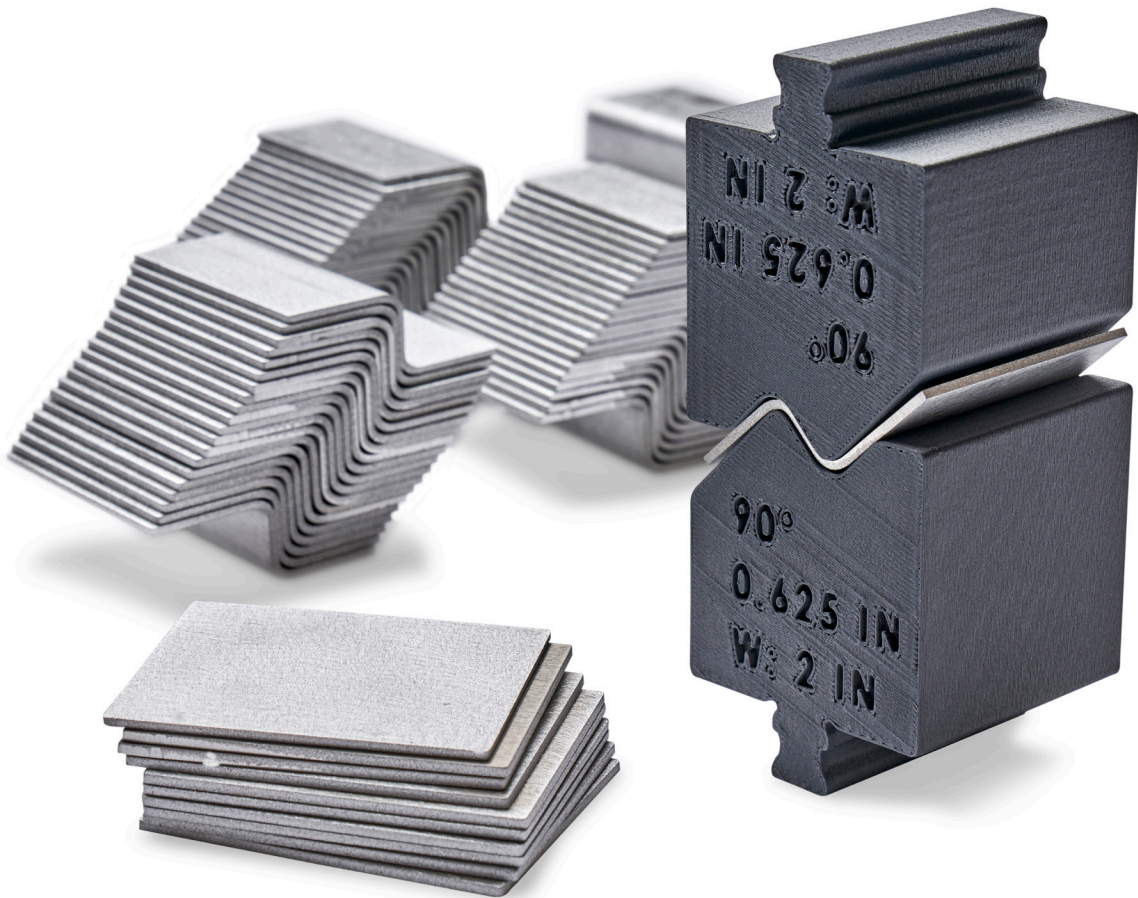
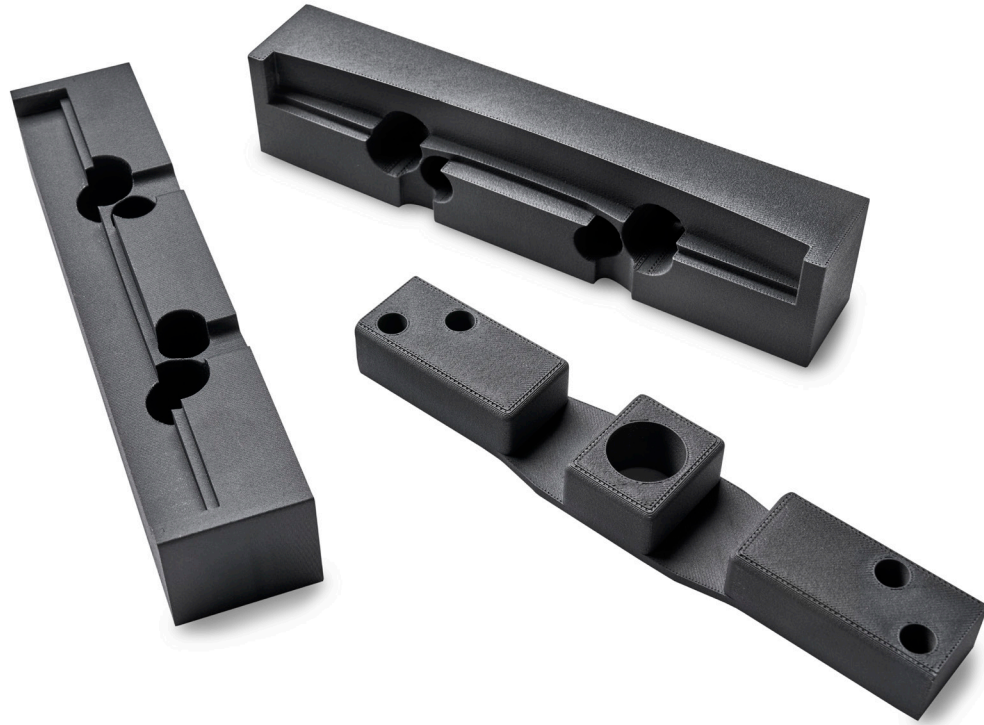


# FDM Nylon-CF10



## Carbon Fiber Filled FDM Thermoplastic Filament

The information presented are typical values intended for reference and comparison purposes only. They should not be used for design specifications or quality control purposes.



## Overview

FDM® Nylon-CF10 is a composite material combining a blended nylon polymer with 10% chopped carbon fiber (by weight), enhancing the material's strength and rigidity. The nylon base polymer also gives FDM Nylon-CF10 good chemical resistance.

## Contents:

Ordering Information. . . . .	3
Physical Properties. . . . .	4
Mechanical Properties . . . . .	5

## Product Information

**Table 1. Printer and Support Material Compatibility**

Printer	Model Tip (Slice)	Support Material	Support Tip
F190™CR	F123CR Hardened Extrusion Head (all slice heights)	QSR Support (SR-35 soluble)	F123 Std Head (all slice heights)
F370®CR	F123CR Hardened Extrusion Head (all slice heights)	QSR Support (SR-35 soluble)	F123 Std Head (all slice heights)

### Build Tray

- F190CR build tray
- F370CR build tray

**Table 2. FDM Nylon-CF10 Ordering Information**

Part Number	Description
<b>Filament Spools</b>	
333-90450	FDM Nylon-CF10 90 cu. in.
<b>Printer Consumables</b>	
123-00303-S	F190CR Build Tray, Standard
123-00304	F370CR Build Tray, Standard
123-00602-S	F123CR Hardened Head for FDM Nylon-CF10

## Physical Properties

Values are measured as printed. XY, XZ, and ZX orientations were tested.

**Table 3. FDM Nylon-CF10 Physical Properties**

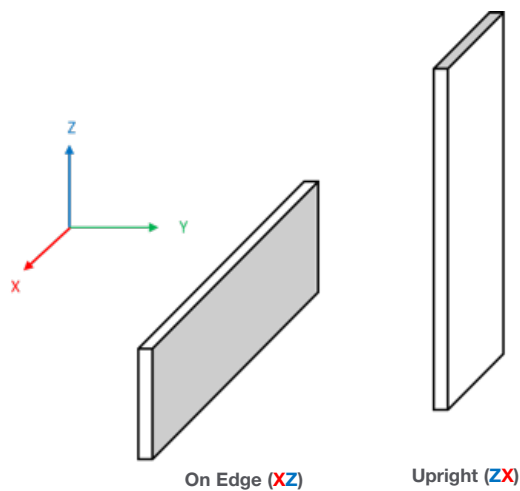
Property	Test Method	Typical Values	
		XY	XZ/ZX
HDT @ 66 psi	ASTM D648 Method B	58 °C (136 °F)	77 °C (171 °F)
HDT @ 264 psi	ASTM D648 Method B	52 °C (126 °F)	62 °C (144 °F)
Tg	ASTM D7426 Inflection Point	109 °C	
CTE (XY)	ASTM E831 (RT to 60 °C)	94 µm/[m*°C]	79 µm/[m*°C]
CTE (Z)	ASTM E831 (RT to 60 °C)	180 µm/[m*°C]	148 µm/[m*°C]
Volume Resistivity	ASTM D257	1.88E+15 Ohms-cm	4.25E+13 Ohms-cm
Specific Gravity	ASTM D257@23 °C	1.1411	

## Mechanical Properties

FDM Nylon-CF10 samples were printed with a 0.010 in. (0.254 mm) layer height.

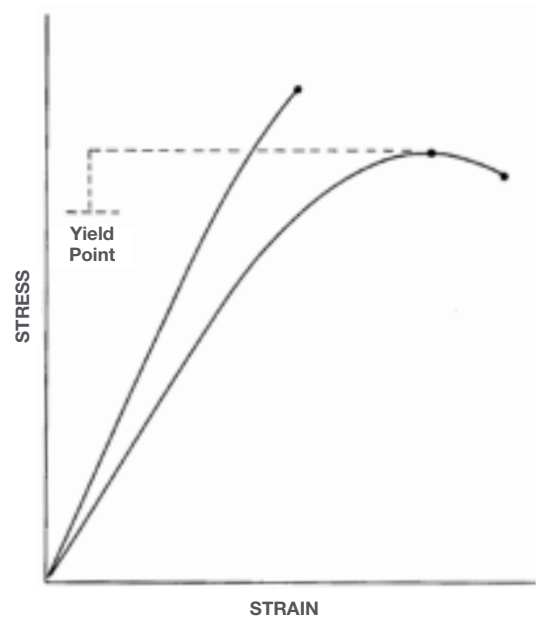
### Print Orientation

Parts created using FDM are anisotropic as a result of the printing process. Below is a reference of the different orientations used to characterize the material.



### Tensile Curves

Due to the anisotropic nature of FDM, tensile curves look different depending on orientation. To the left is a guide of the two types of curves seen when printing tensile samples and what reported values mean.



- A = Tensile at break, elongation at break (no yield point)
- B = Tensile at yield, elongation at yield
- C = Tensile at break, elongation at break

**Table 4. FDM Nylon-CF10 Mechanical Properties**

0.010 in. Layer Height		XZ Orientation	ZX Orientation
<b>Tensile Properties: ASTM D638</b>			
Yield Strength	MPa	69.1 (3.74)	25.4 (3.61)
	psi	10034 (543)	3684 (524)
Elongation @ Yield	%	4.44 (0.61)	2.52 (0.60)
Strength @ Break	MPa	67.6 (4.12)	24.7 (3.81)
	psi	9809 (598)	3576 (552)
Elongation @ Break	%	4.74 (0.73)	2.41 (0.62)
Modulus (Elastic)	GPa	4.15 (0.12)	1.57 (0.071)
	ksi	602 (16.7)	228 (10.3)
<b>Flexural Properties: ASTM D790, Procedure A</b>			
Strength @ Break	MPa	123.7 (2.74)	39.7 (3.49)
	psi	17940 (398)	5751 (506)
Strain @ Break	%	4.61 (0.24)	3.16 (0.44)
Modulus	GPa	5.37 (0.17)	1.54 (0.101)
	ksi	779 (24.7)	223 (14.7)
<b>Compression Properties: ASTM D695</b>			
Yield Strength	MPa	No Yield	No Yield
	psi	No Yield	No Yield
Peak Strength	MPa	76.1 (40.0)	124.2 (12.15)
	psi	11034 (5801)	18016 (1762)
Modulus	GPa	2.13 (0.041)	1.57 (0.045)
	ksi	309 (5.9)	228 (6.5)
<b>Impact Properties: ASTM D256, ASTM D4812</b>			
Notched	J/m	202.7 (8.6)	36.4 (13.4)
	ft*lb/in	3.79 (0.16)	0.68 (0.25)
Unnotched	J/m	1030.5 (74.3)	117.11 (17.1)
	ft*lb/in	19.27 (1.39)	2.19 (0.32)

(1) Values in parenthesis are standard deviations.

#### Stratasys Headquarters

7665 Commerce Way,  
Eden Prairie, MN 55344  
+1 800 801 6491 (US Toll Free)  
+1 952 937-3000 (Intl)  
+1 952 937-0070 (Fax)

[stratasys.com](http://stratasys.com)

ISO 9001:2015 Certified

1 Holtzman St., Science Park,  
PO Box 2496  
Rehovot 76124, Israel  
+972 74 745 4000  
+972 74 745 5000 (Fax)

(주) 티모스 - 한국 공식 파트너  
경기도 광명시 하안로 60 C동 1108호  
(소하동, 광명테크노파크)  
+82 2 6297 5750  
[www.thymos.co.kr](http://www.thymos.co.kr)  
[3dp@thymos.co.kr](mailto:3dp@thymos.co.kr)

